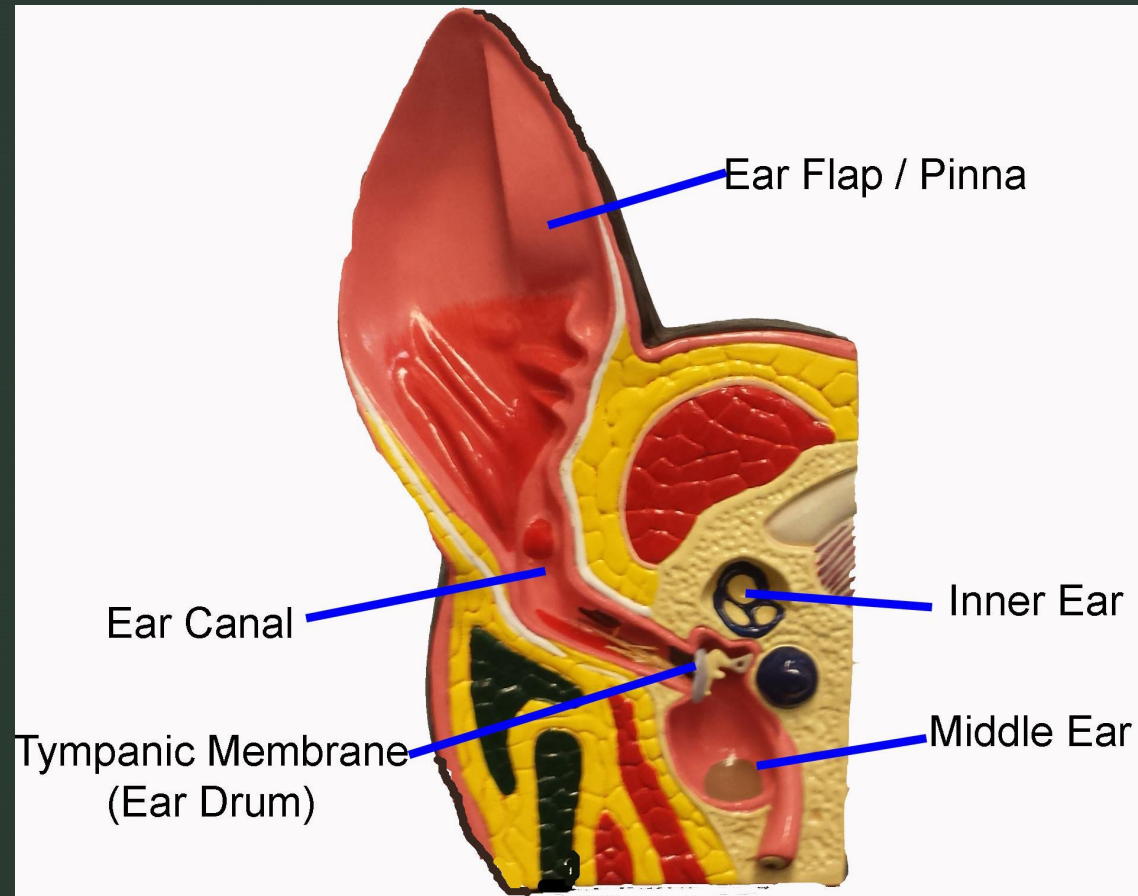


▀ Dog and Cat Health

▀ Objectives

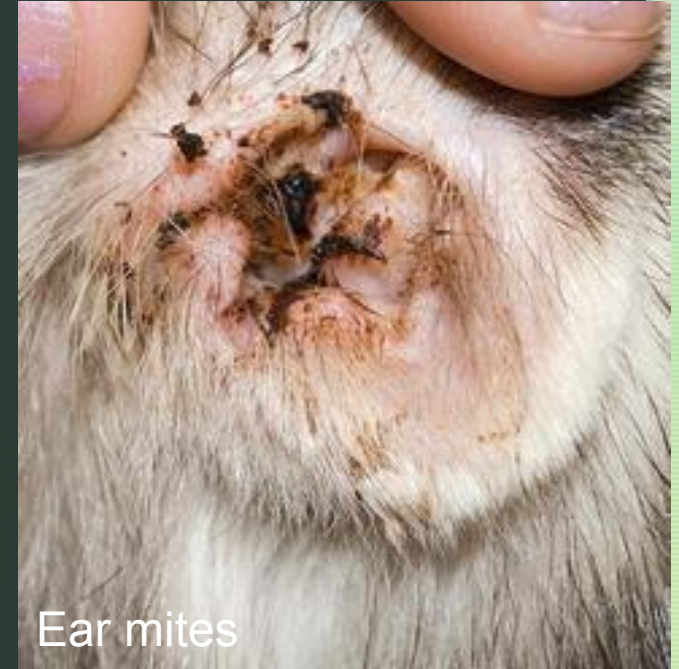
- To be able to perform self health checks on both dogs and cats
- Identify healthy and abnormal functions among cats or dogs
- How to be proactive on potential problems

Anatomy of ears



Signs of an issue with ears.

- Head shaking
- Scratching or rubbing the ears
- Inflammation, pain, and redness of the ear flap and canal
- Crusty build ups on the ear flap or in the canal
- Deafness
- Discharge from the ear canal
- Yeasty or unusual smell



Ear mites



Infection

Ear maintenance

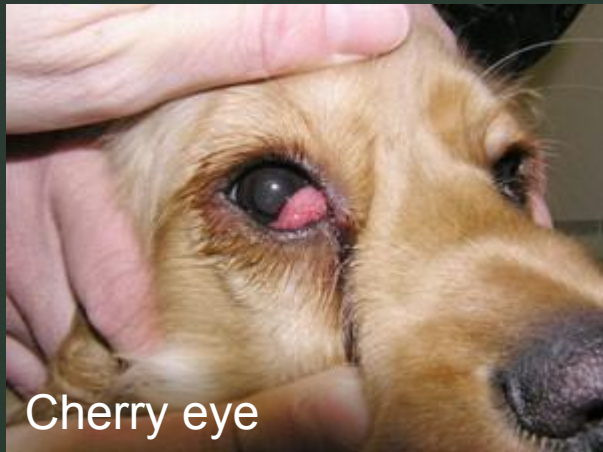
- Daily checking
 - Weekly, monthly cleaning
 - Use approved cleaning solutions
 - Use proper cleaning tools such as cotton balls and Q-tips
- ***Don't go deep into ear canal***

<https://youtu.be/mn8Dtgh2eMc>



▀ Eyes and signs of trouble

- Check for clarity
- Look for any swelling or redness
- Watch behavior



Cherry eye

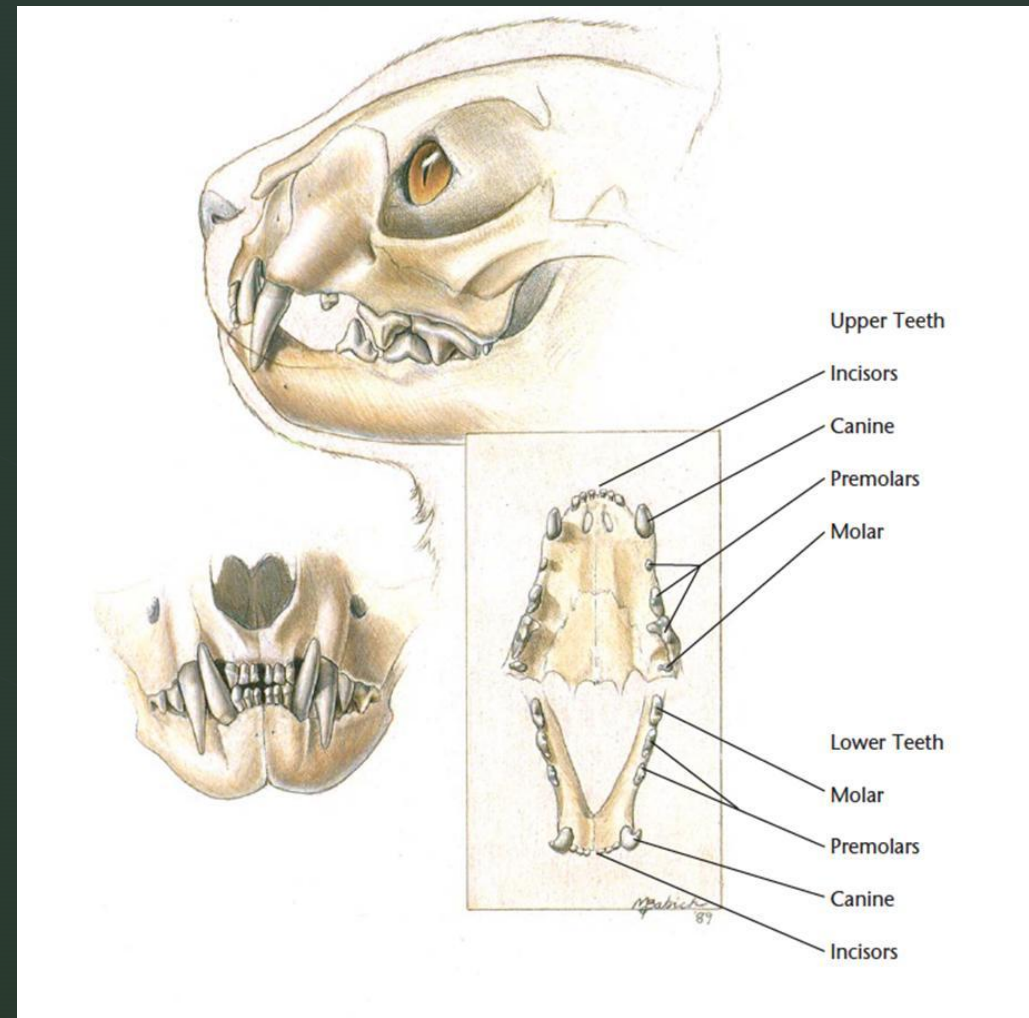
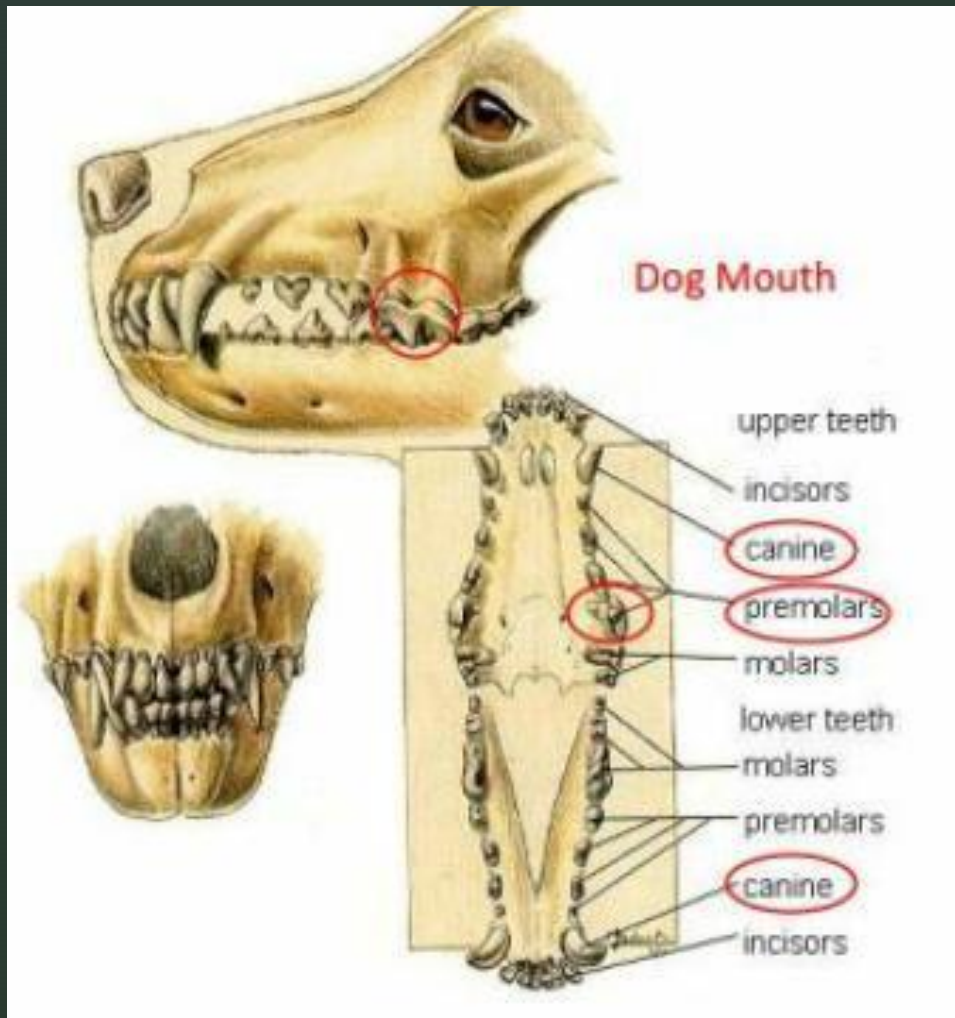


Eye infection



Healthy eye

Anatomy of mouth



Noticing problems

- Red or bleeding gums
- Loose teeth
- Bad breath
- Lumps or bumps in the mouth
- Ropey or bloody saliva
- Difficulty picking up food
- White gums
- Yellow or brown teeth



Periodontal disease

- Begins with bacteria from in the mouth.
- Plaque then builds up making its way under the gums.
- Can cause gingivitis (inflammation of gums) and periodontitis (loss of bone and tissue).

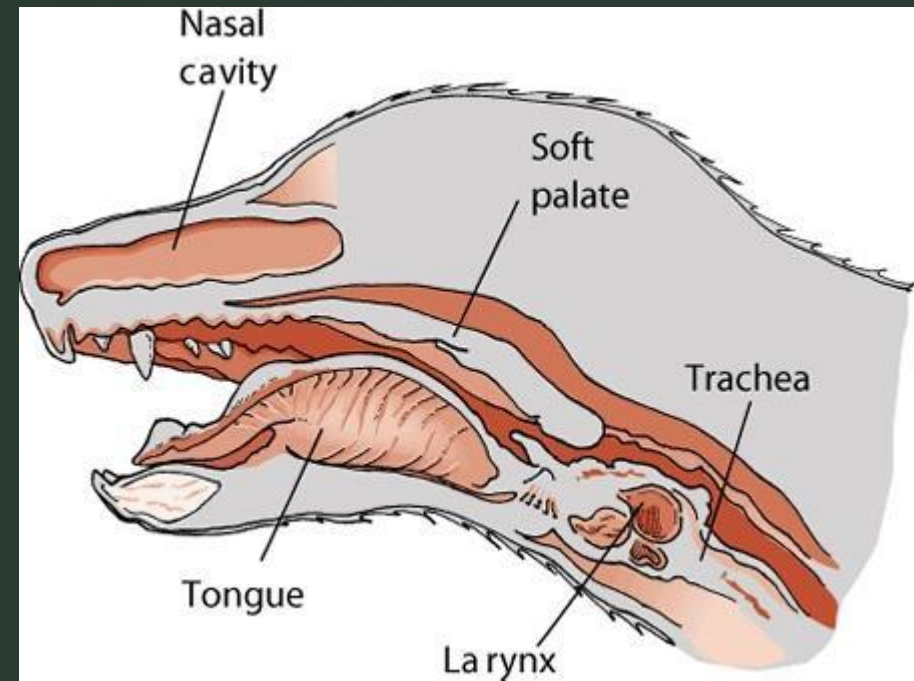
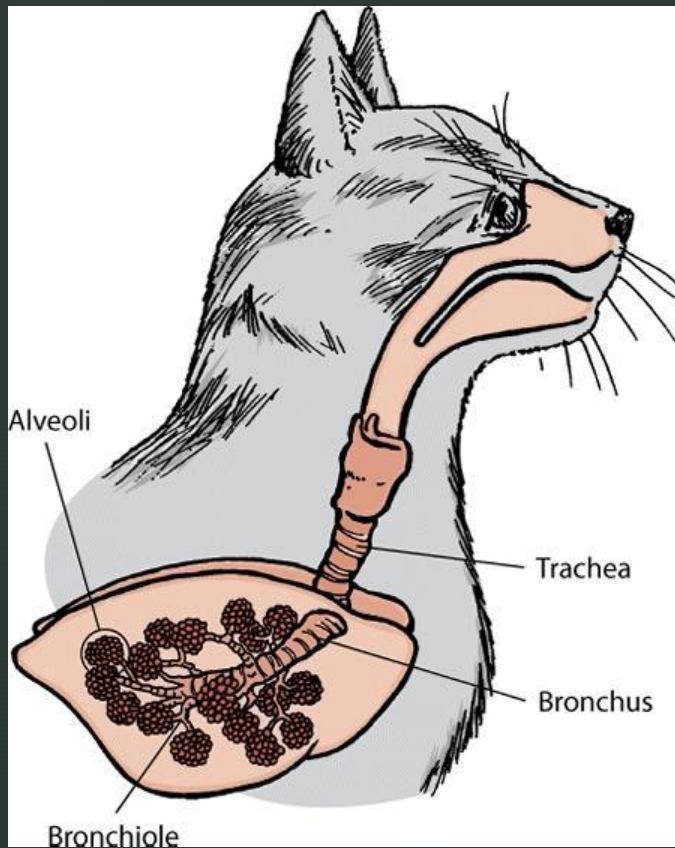


Mouth maintenance

- Pet safe toothpaste
- Wipes
- Dental treats
- Professional cleaning

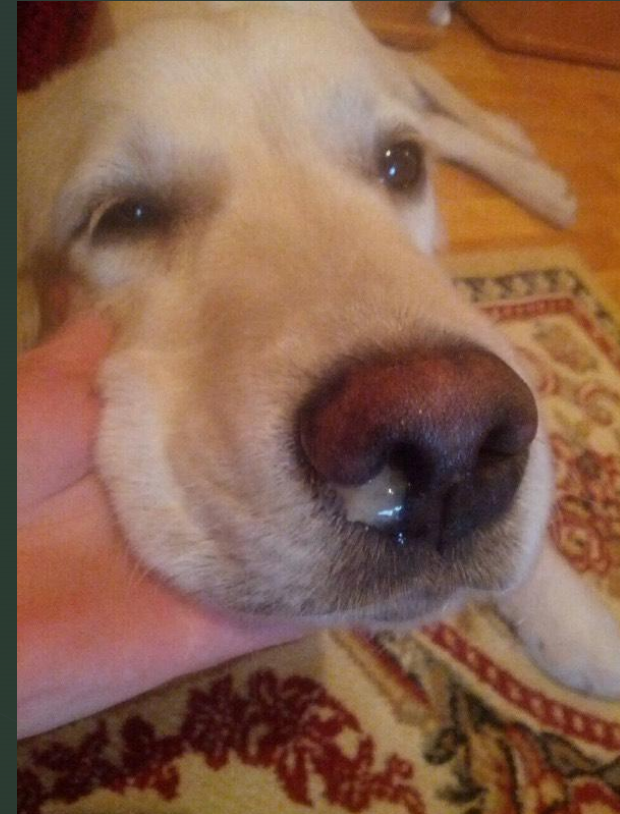


Respiratory system anatomy



Respiratory problems

- Labored breathing
- Crackling or raspy noise
- Dry heaving
- Nasal discharge

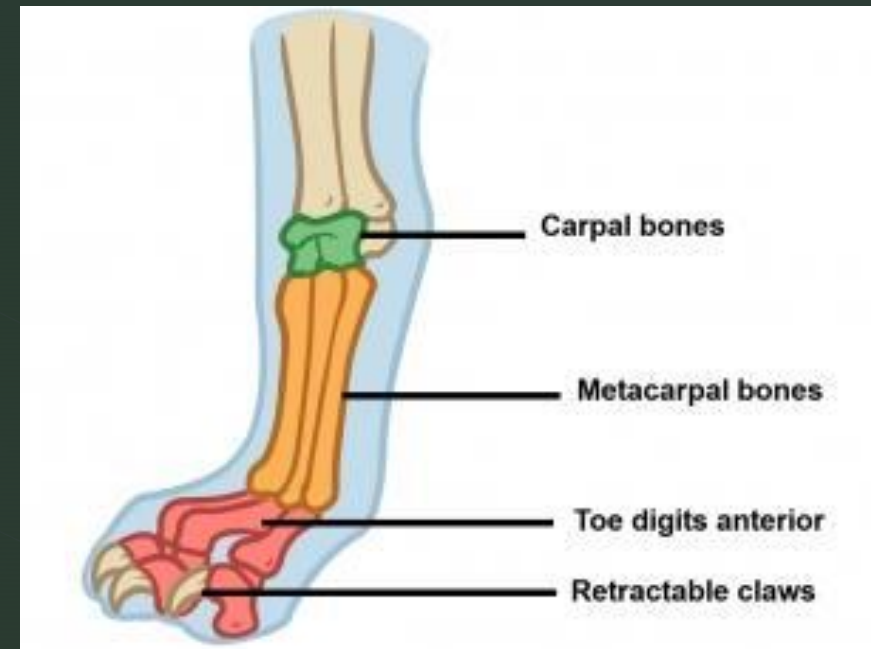
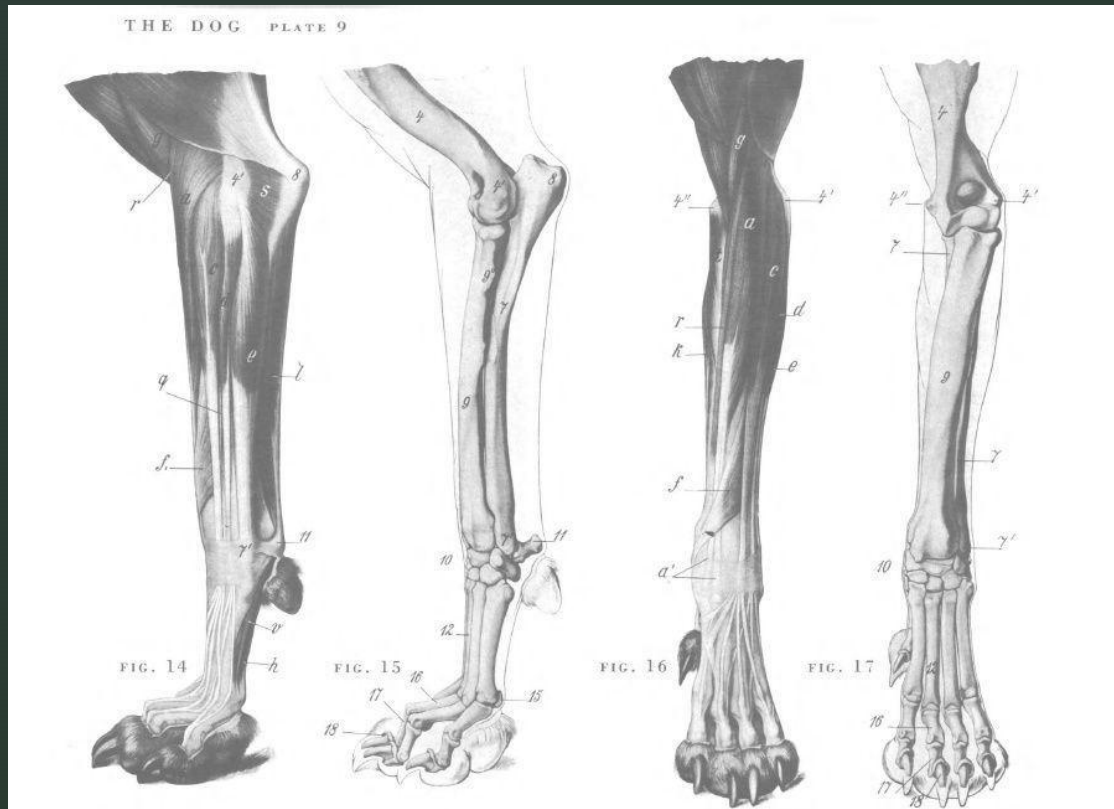


Checking for a healthy respiratory system

- Listen to chest and breathing for abnormal sounds.
- Look for a clear nasal passage.
- Look for even paced lung expansion and contraction.



Legs and paws

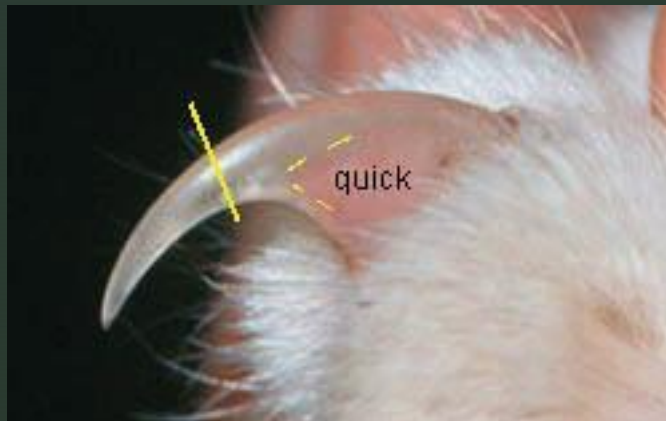


Problems in legs and paws

- Lameness
- Troubles getting up or down
- Swelling and tenderness
- Vocalizations when moving
- Abnormal bumps
- Dragging limb



Properly trimming nails



■ Allergies in pets

- Itching
- Rashes
- Vomiting
- Diarrhea
- Hives
- Swelling in face

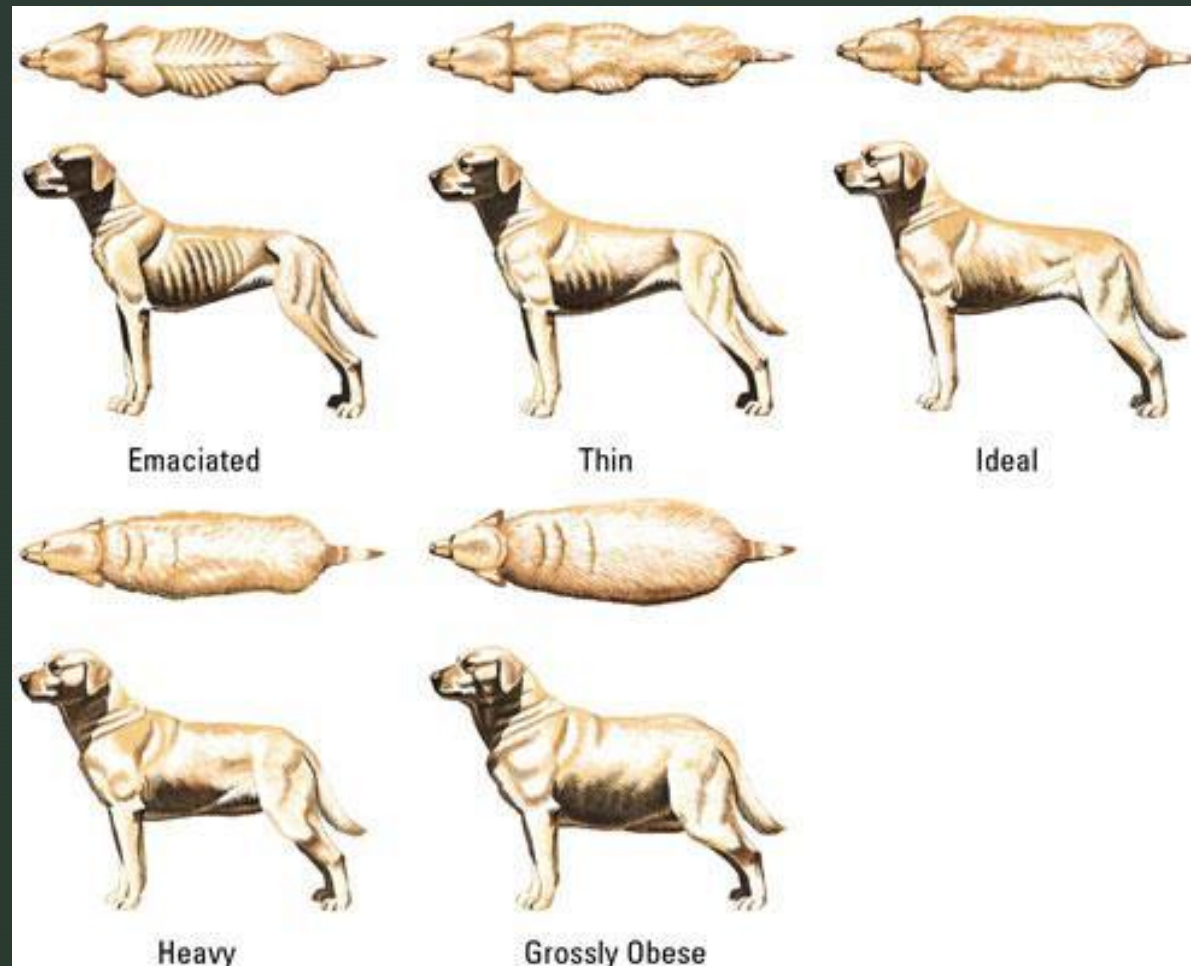


Coat and skin health Issues

- Dullness
- Dry and brittle
- Dandruff
- Smell from skin or coat
- Scabs or bald spots
- Itching



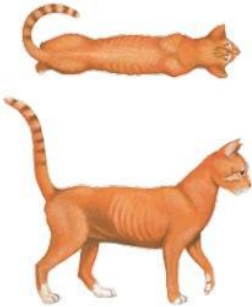

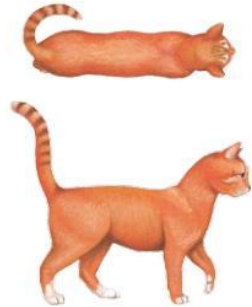


Body weight examinations- Dogs



Body weight examination- Cat

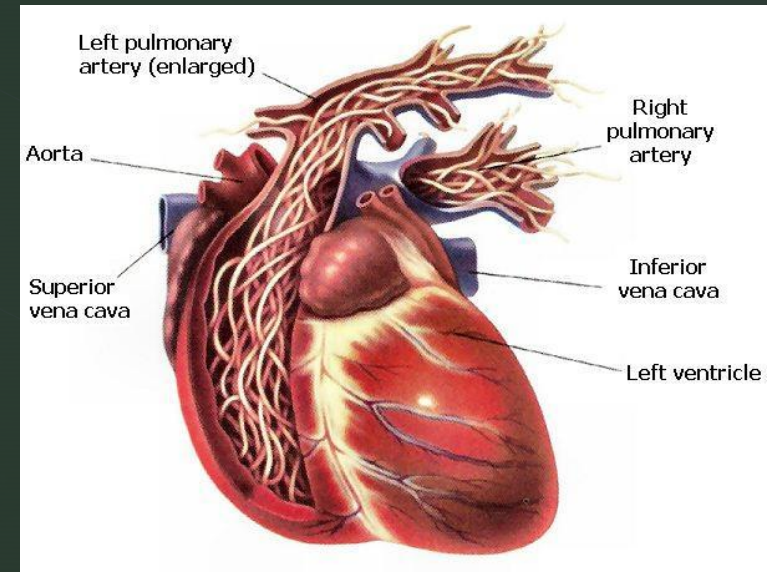
WHAT SHAPE IS YOUR CAT?

A little extra weight can be a **BIG PROBLEM**. Whether it's once a week or once a month, check your cat's body score regularly to make sure she's staying happy and healthy.

BODY 1 SCORE	BODY 2 SCORE	BODY 3 SCORE	BODY 4 SCORE	BODY 5 SCORE
VERY THIN < 5% body fat Ribs – Easily felt with no fat cover Tail Base – Bones are raised, no fat cover Side View – Severe abdominal tuck Overhead View – Accentuated hourglass shape 20% below ideal body weight	UNDERWEIGHT 5-15% body fat Ribs – Easily felt with little fat cover Tail Base – Bones are raised with slight fat cover Side View – Abdominal tuck Overhead View – Marked hourglass shape 10% below ideal body weight	IDEAL BODY WEIGHT 16-25% body fat Ribs – Easily felt with slight fat cover Tail Base – Some contour with slight fat cover Side View – Abdominal tuck Overhead View – Well-proportioned waist Ideal body weight	OVERWEIGHT 26-35% body fat Ribs – Difficult to feel under moderate fat cover Tail Base – Some thickening, bones palpable under moderate fat cover Side View – No abdominal tuck Overhead View – Back is slightly broadened at waist 10% above ideal body weight	OBESE > 35% body fat Ribs – Difficult to feel under thick fat cover Tail Base – Thickened and difficult to feel under thick fat cover Side View – No waist, fat hangs from abdomen Overhead View – Back is markedly broadened. 20% above ideal body weight
				
Consult your veterinarian!	Consult your veterinarian to see if you are underfeeding your cat.	Great job! Keep doing what you are doing.	Consult your veterinarian about the right nutrition for your cat and about ways to increase activity.	Extra weight can cause serious health problems for your cat. Consult your veterinarian about the right nutrition for your cat.

Parasites

- Ticks
- Fleas
- Tapeworm
- Pinworms
- Heartworm
- Mites



Heartworm

■ Lyme disease

- Contracted through infected ticks
- Ticks must be attached for about 48 hours to pass it on
- Symptoms can include: fever, lameness, lethargy, and soreness
- Clinical illness can continue from 3-5 months
- Treatment includes a long duration use of doxycycline or amoxicillin



Parasites prevention

- Heartworm monthly prevention medicines
- Flea and tick prevention collars and ointments
- Regular fecal test



Overall health check

- Ears
- Eyes
- Mouth
- Respiratory system
- Legs and paws
- Weight
- Parasites prevention



Contact vet if you notice any abnormalities.

Be sure to keep track!

- Keep track of when you do a health check
- Record results to help determine differences between checks
- Taking pictures can also help

